

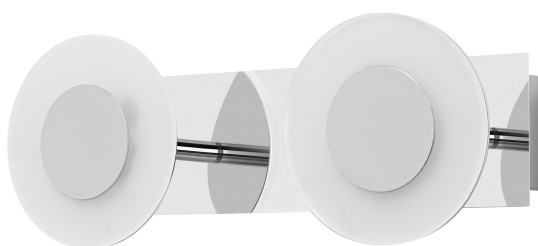
PRODUCT DATASHEET

SMART+ Wifi Orbis Wall Wave IP44 320mm TW

SMART+ WIFI ORBIS WALL WAVE | Smart bathroom decorative ceiling and wall with wifi technology IP44 TW and dimmable luminaires

Areas of application

- Bathrooms



Product benefits

- Easy and quick installation
- Steerable

Product features

- Type of protection: IP44
- Controllable via voice control available: Google Assistant or Amazon Alexa
- Adjustable color temperature via Tunable White: 3,000...6,500 K
- Dimmable
- Network protocol: WiFi
- Controllable via SMART+ App (with minimum Android 8.0 or iOS 14.0)



TECHNICAL DATA

Electrical data

| | |
|--------------------------------------|---------------------|
| Nominal wattage | 15.00 W |
| Nominal voltage | 220...240 V |
| Mains frequency | 50...60 Hz |
| Nominal current | 64.000 mA |
| Inrush current | 1.57 A |
| Inrush current time T _{h50} | 100 µs |
| Power factor λ | > 0.90 |
| Total harmonic distortion | < 20 % |
| Protection class | II |
| Operating mode | External LED driver |

Photometrical data

| | |
|--------------------------------------------------------------|----------------------|
| Luminous flux | 800 lm |
| Total luminous flux of contained light sources | 1400 lm |
| Luminous efficacy | 50 lm/W |
| Color temperature | 3000...6500 K |
| Reference control setting of contained light source (Kelvin) | 3000 K ¹⁾ |
| Light color (designation) | Tunable White |
| Color rendering index Ra | > 80 |
| Standard deviation of color matching | < 6 sdcm |
| Photobiological safety group acc. to EN62778 | RG0 |
| Photobiological safety group acc. to EN62471 | RG0 |
| Beam angle | 110 ° |

1) Performing a reset will restore the default values set by the manufacturer

Dimensions & Weight

| | |
|----------------|-----------|
| Length | 320.00 mm |
| Width | 120.00 mm |
| Height | 93.00 mm |
| Product weight | 990.00 g |

SMART WIFI ORBIS WAVE 320
IP44 TWCR

Materials & Colors

| | |
|-----------------|-------------------------------|
| Product color | Silver |
| Housing color | Silver |
| Body material | Polymethylmethacrylate (PMMA) |
| Cover material | Polycarbonate (PC) |
| Mercury content | 0.0 mg |

Application & Mounting

| | |
|----------------------------------------|----------------|
| Ambient temperature range | -20...+40 °C |
| Temperature range at storage | -20...+80 °C |
| Type of connection | Screw terminal |
| Type of protection | IP44 |
| Protection class IK (shock resistance) | IK03 |
| Dimmable | Yes |
| Type of dimming | WiFi |
| Mounting type | Surface |
| Mounting location | Ceiling |
| Application environment | Indoor |
| With light source | Yes |

Lifespan

| | |
|----------------------------|---------|
| Lifespan L70/B50 at 25 °C | 30000 h |
| Number of switching cycles | 15000 |

Emergency lighting

| | |
|----------------------------------|------|
| Type of emergency operation test | None |
| Integrated test switch | No |

Certificates & Standards

| | |
|------------------------------------------------------|-----------------|
| Standards | CE / UKCA |
| Luminaire with limited surface temperature, "D sign" | No |
| Replaceable light source (EPREL) | Not replaceable |






EQUIPMENT / ACCESSORIES

- Mounting bracket included
- Mounting screws and dowels included
- Control via app or voice control requires compatible Smart home system
- For control via SMART+ App, a smartphone or tablet is required (with minimum Android 8.0 or iOS 14.0)

Safety advice

- All electrical connections must be made by a qualified person.
- Caution, risk of electric shock.
- Check wall-ceiling for suitability. If uncertain, seek professional advice.

DOWNLOAD DATA

| Documents and certificates | | Document name |
|------------------------------------------------------------------------------------|----------------------------------------|-------------------------------------|
|  | User instruction / safety instructions | SMART WIFI ORBIS WAVE TW IP44 |
|  | Legal information | Legal insert Residential luminaires |
|  | Declarations of conformity | CE Declaration Smart Orbis |
|  | Declarations of conformity UKCA | SMART WIFI ORBIS |
|  | EU Data Act | SMART WiFi Lamps and Luminaires |

LOGISTICAL DATA

| Product code | Packaging unit (Pieces/Unit) | Dimensions (length x width x height) | Gross weight | Volume |
|---------------|------------------------------|--------------------------------------|--------------|-----------------------|
| 4058075573802 | Folding box 1 | 115 mm x 150 mm x 390 mm | 1152.00 g | 6.73 dm ³ |
| 4058075573819 | Shipping box 4 | 318 mm x 248 mm x 410 mm | 5335.00 g | 32.33 dm ³ |

The mentioned product code describes the smallest quantity unit which can be ordered. One shipping unit can contain one or more single products. When placing an order, for the quantity please enter single or multiples of a shipping unit.

References / Links

- Further information and frequently asked questions (FAQs) at www.ledvance.com/consumer/smart/faq

DISCLAIMER

Subject to change without notice. Errors and omission excepted. Always make sure to use the most recent release.